



Philadelphia Department of Public Health Division of Disease Control

DONALD F. SCHWARZ, MD, MPH
Deputy Mayor, Health & Opportunity
Health Commissioner

NAN FEYLER, JD, MPH
Chief of Staff

CAROLINE C. JOHNSON, MD
Director, Division of Disease Control

Health Advisory

Respiratory Virus Surveillance Summary and Reporting Requirements for 2011-2012 Season October 18, 2011

Surveillance Summary

The last several weeks have marked the return of the cold season, as emergency departments in the Philadelphia area identified increases of respiratory-related visits during this time period. Clinical laboratories have confirmed this observation, with increasing detections of rhinoviruses in respiratory specimens (Figure). Rhinovirus infection is an important trigger of asthma exacerbation, a condition that can lead to hospitalization. In addition to rhinoviruses, adenoviruses, respiratory syncytial viruses, and parainfluenza viruses are also circulating at low levels. No confirmed cases of influenza have been identified in Philadelphia this season.

The Philadelphia Department of Public Health (PDPH) will provide updates on influenza activity in the form of a weekly surveillance report posted on the Health Information Portal (hip.phila.gov).

Reporting Requirements for Influenza

PDPH requests that healthcare providers and infection prevention practitioners report the following influenza cases to the health department using the attached revised form for the 2011-2012 season:

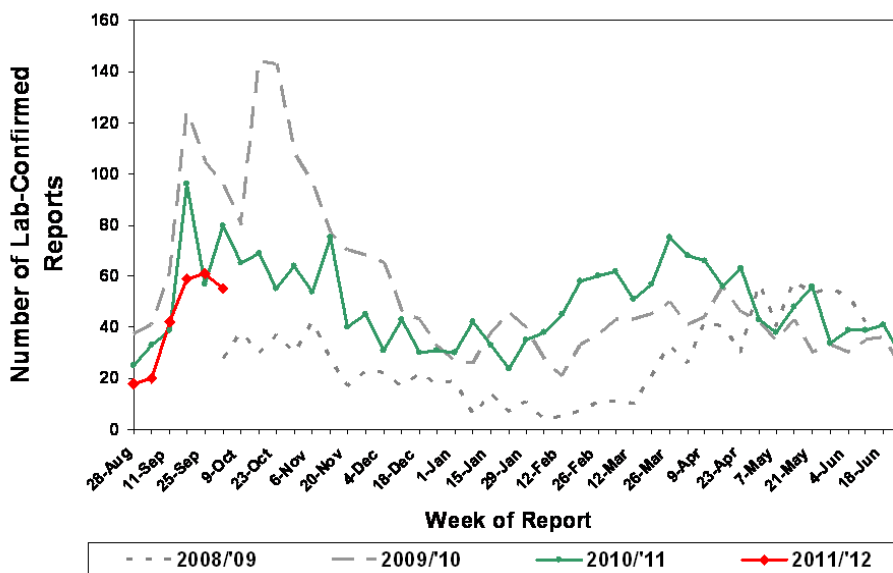
- Hospitalized persons with laboratory-confirmed influenza (including positive rapid antigen tests)
- Fatal cases of laboratory-confirmed (including positive rapid tests) or suspected influenza
- Outbreaks of influenza in a long-term care facility, school, childcare center, or shelter

Note that the reporting form has been modified so that only minimal demographic and laboratory information is required for hospitalized cases who are *not* in the intensive care unit. Cases can be reported via fax to 215-238-6947. A fillable PDF version of the case report form can be found at hip.phila.gov. Outbreaks can be reported by calling 215-685-6740. Additional guidance for influenza testing, treatment, and infection prevention in long-term care facilities will be provided later in the season.

Vaccination Clinics

Philadelphia residents can receive free influenza vaccine at any PDPH flu clinic. The locations and hours of these clinics is available at: www.phila.gov/health/DiseaseControl/shotschedule.html or 215-685-6458.

Laboratory-Based Surveillance for Rhinovirus:
Philadelphia, Counts for 2008/2009 - 2011/2012
Seasons



Message #: PDPH-HAN-00155V-10-18-11
Philadelphia Department of Public Health

Division of Disease Control • 500 South Broad Street, Philadelphia, PA 19146
215-685-6740 (phone) • 215-686-4514 (after hours) • 215-238-6947 (fax) • www.phila.gov/health/DiseaseControl • hip.phila.gov